





view from North Boulevard

EBRPL RIVER CENTER BRANCH LIBRARY
3.5.15



WHLC Architecture • Schwartz/Silver
A Joint Venture



lobby interior

EBRPL RIVER CENTER BRANCH LIBRARY
3.5.15



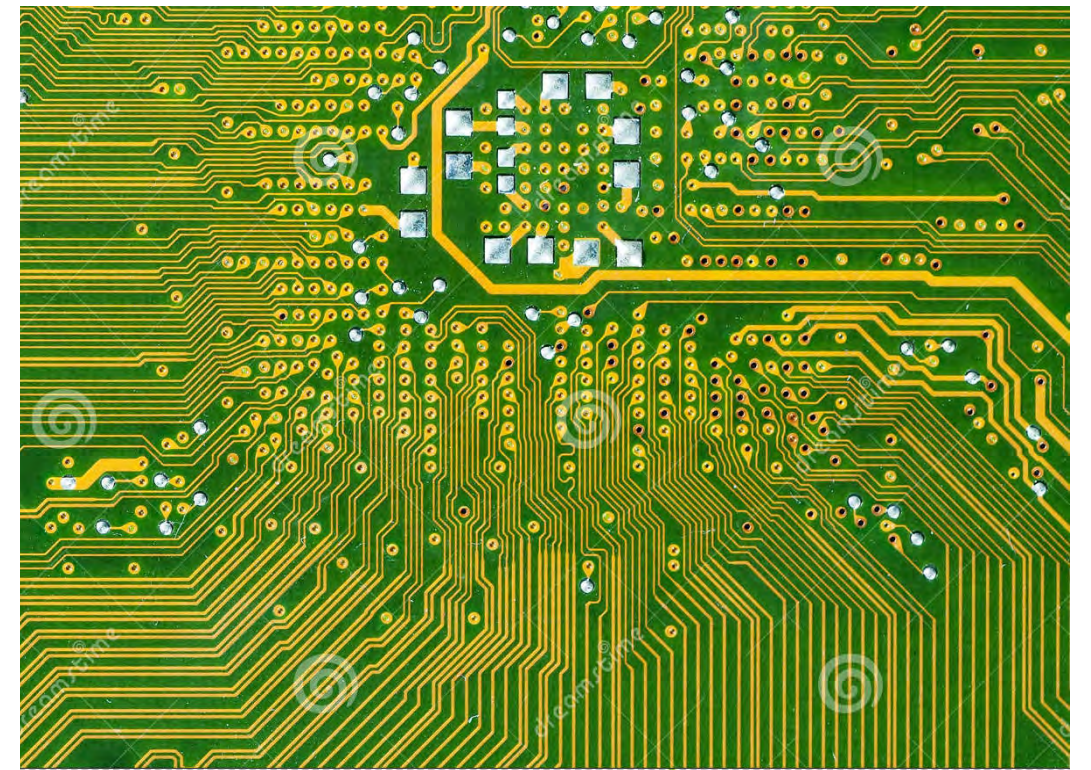
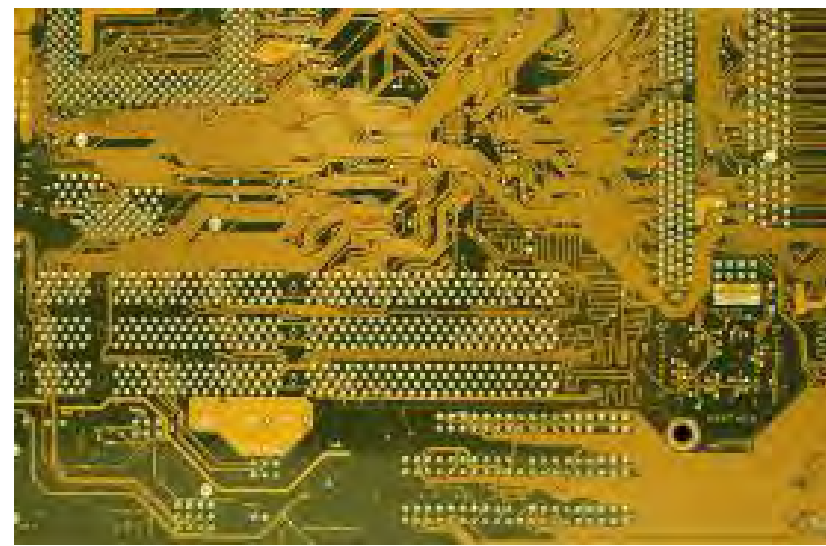
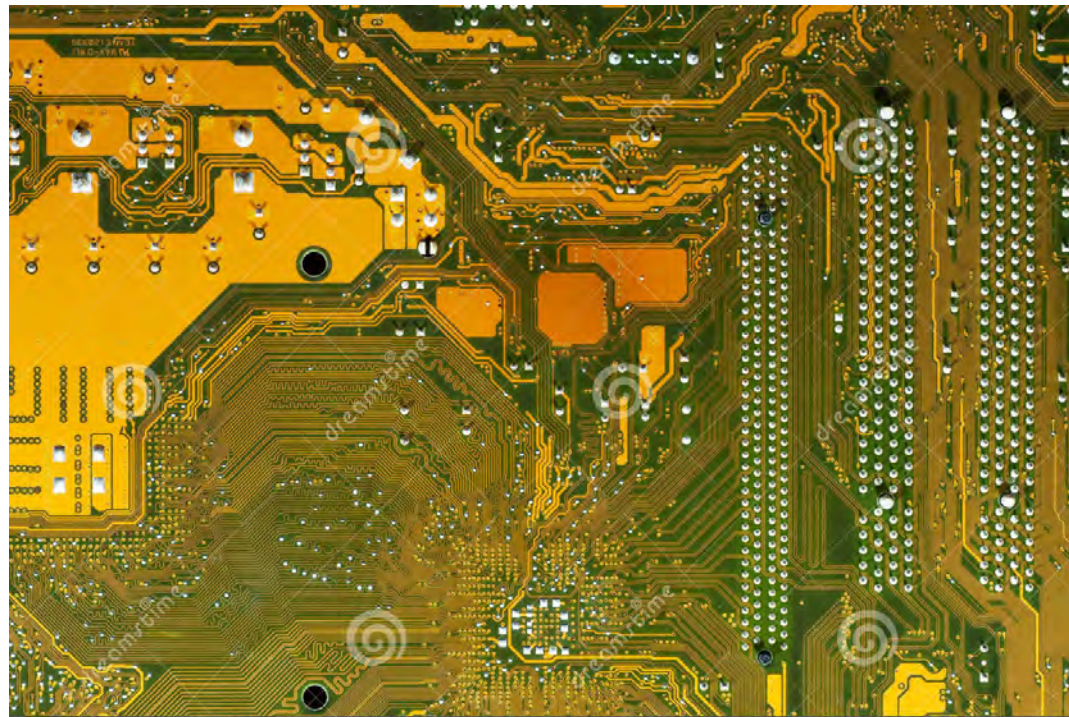
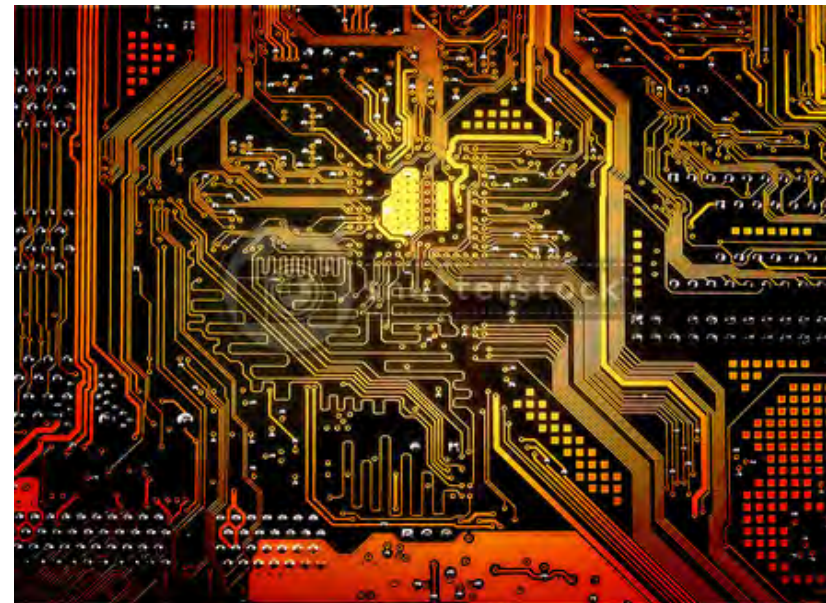
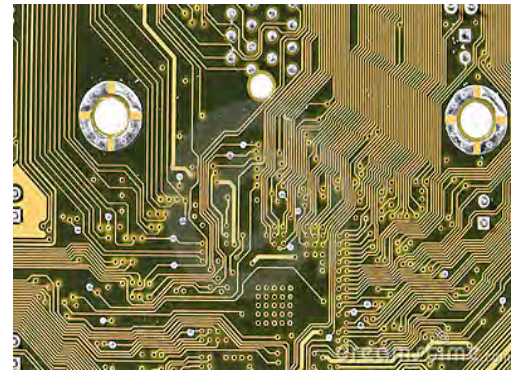
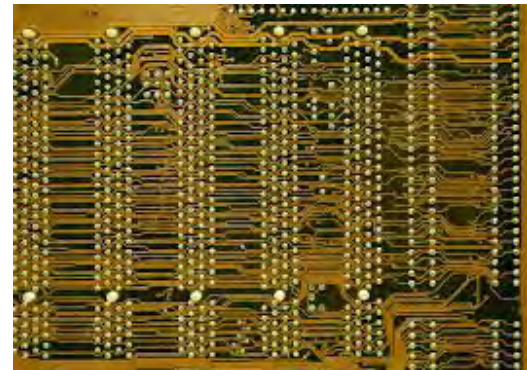
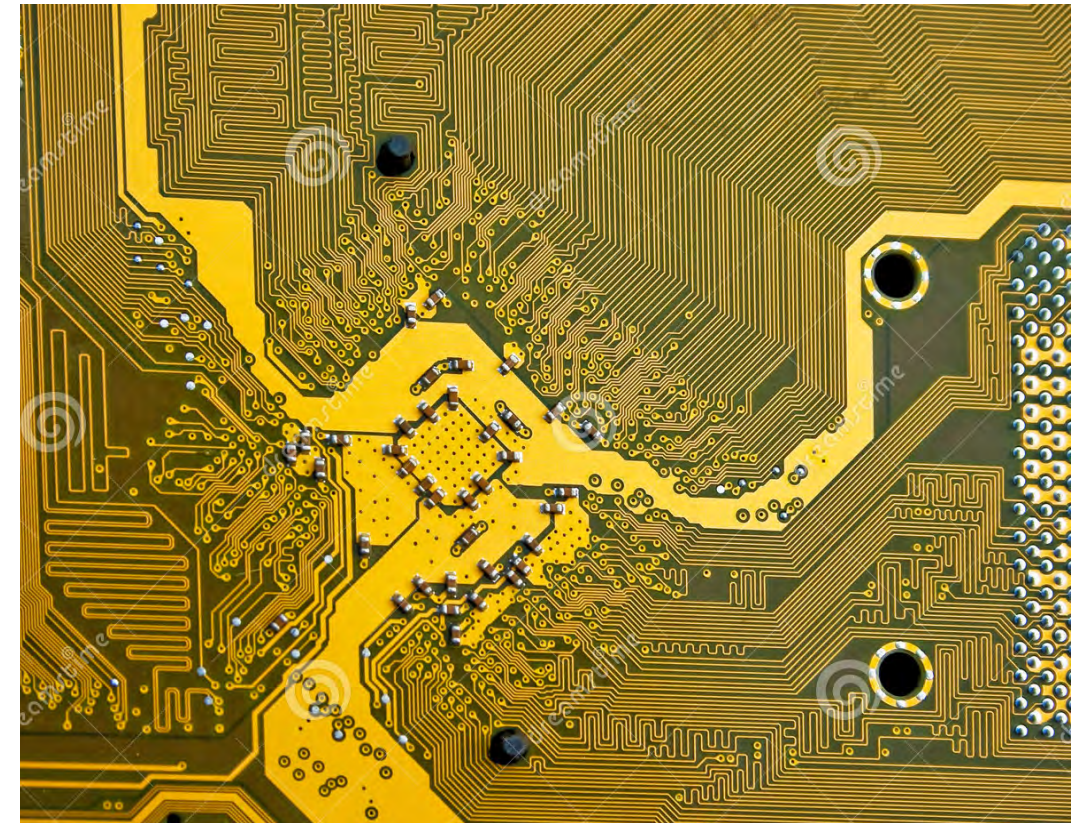
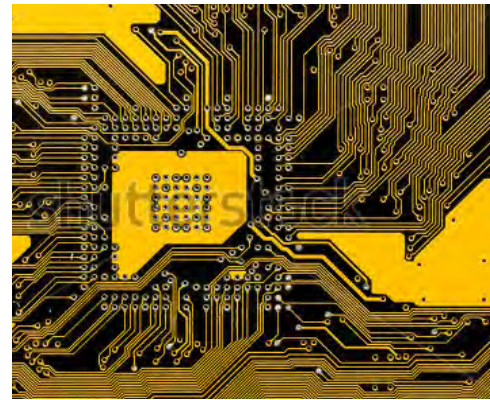
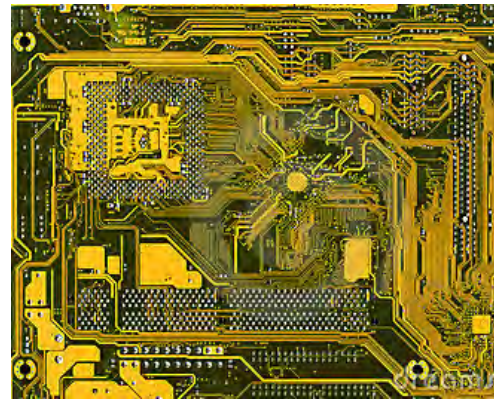
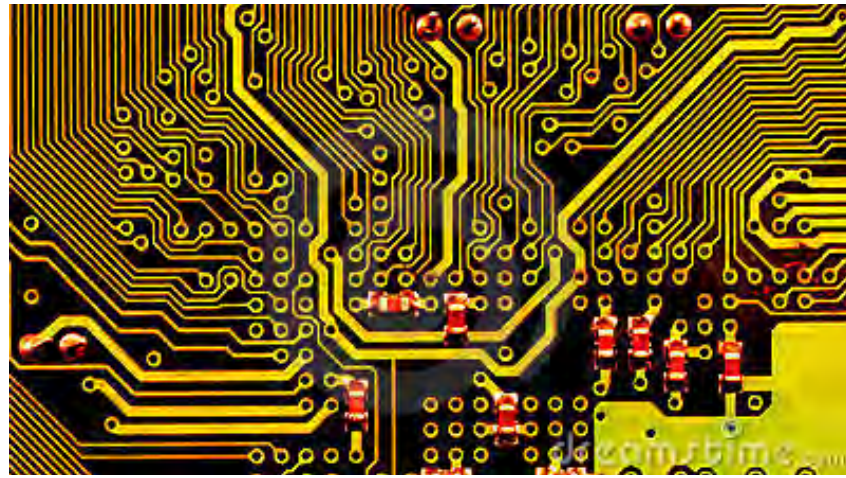
lobby interior with media wall alternate

EBRPL RIVER CENTER BRANCH LIBRARY
3.5.15



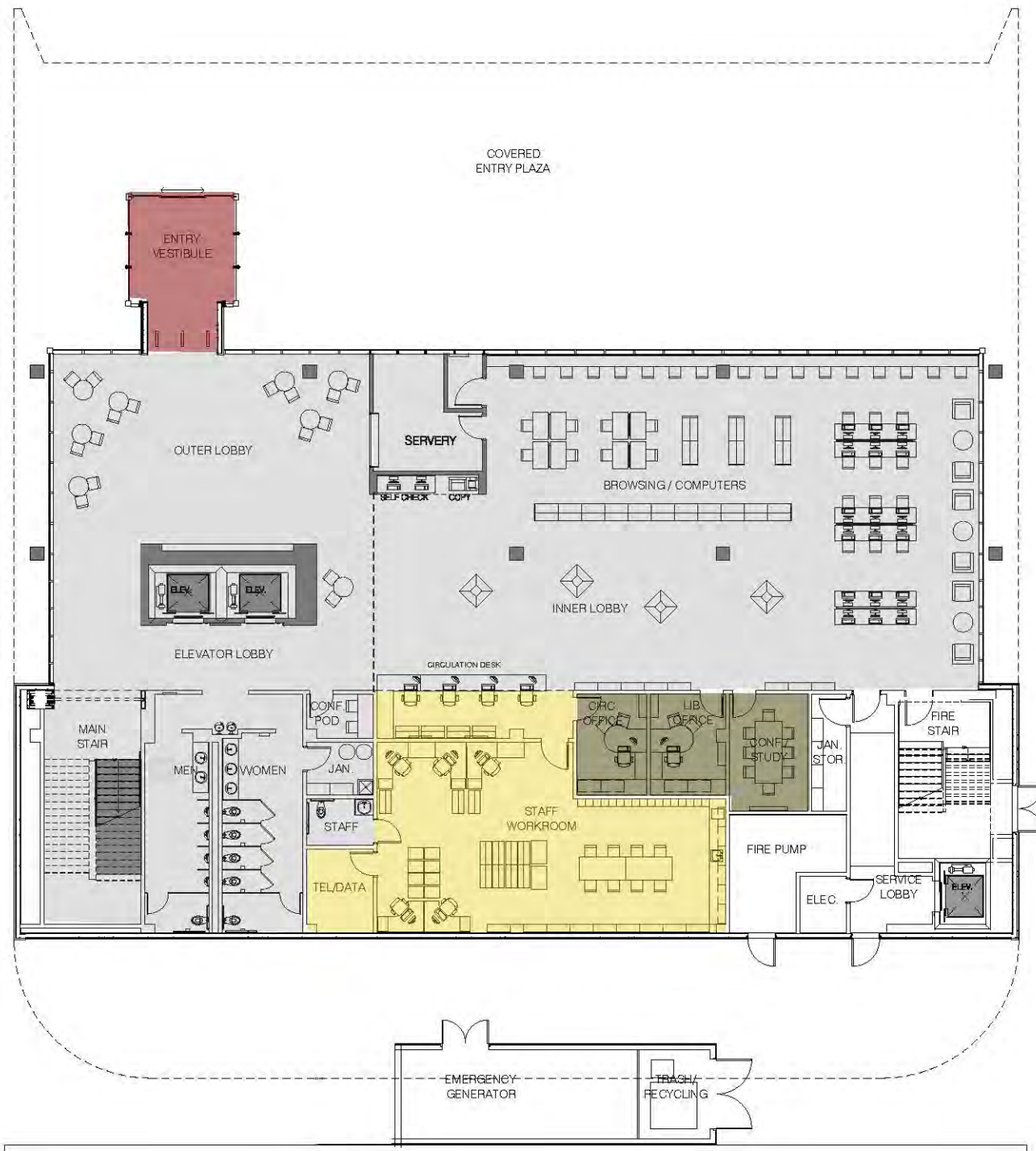
lobby/browsing interior

EBRPL RIVER CENTER BRANCH LIBRARY
3.5.15

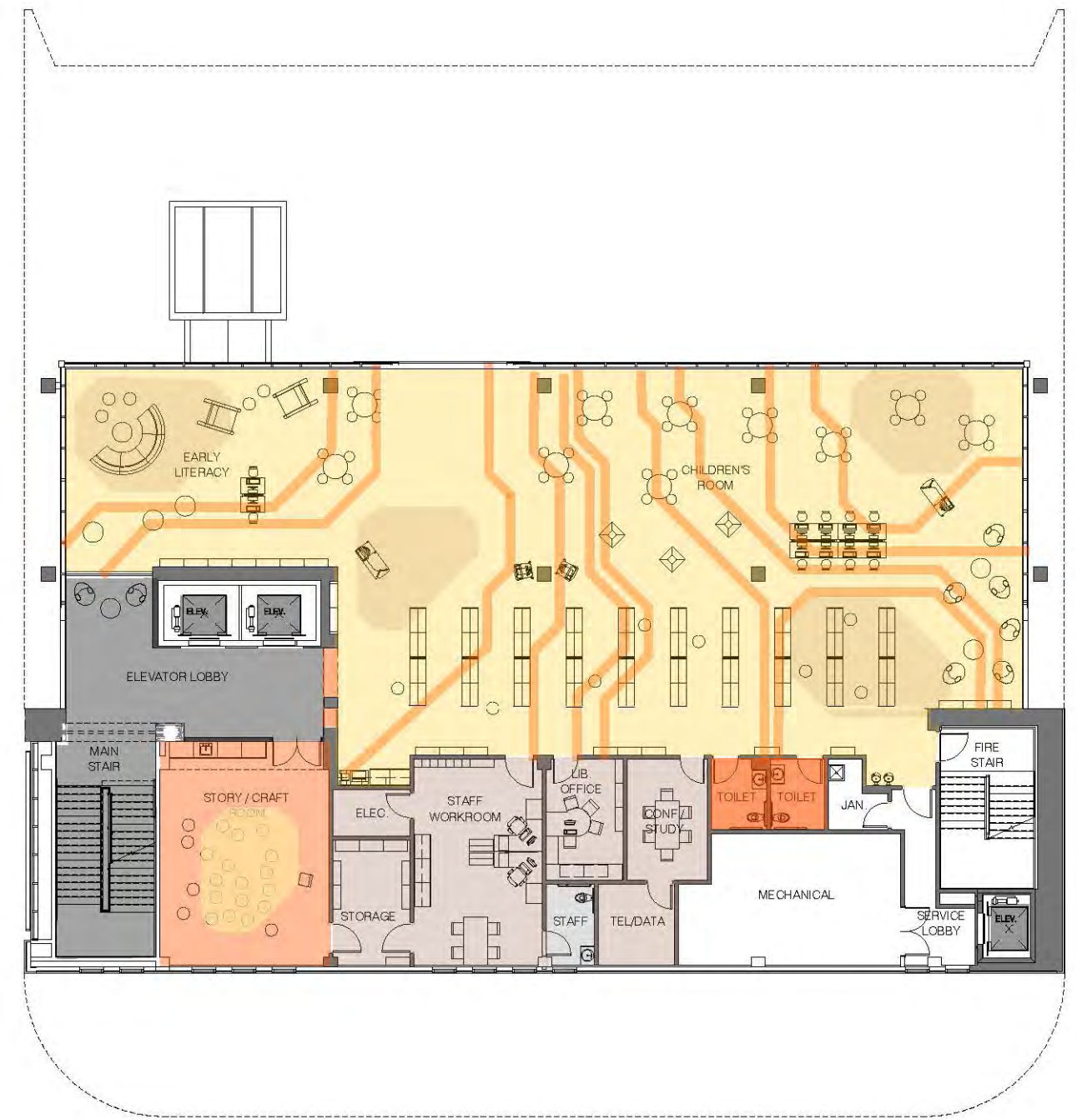


color + pattern inspiration

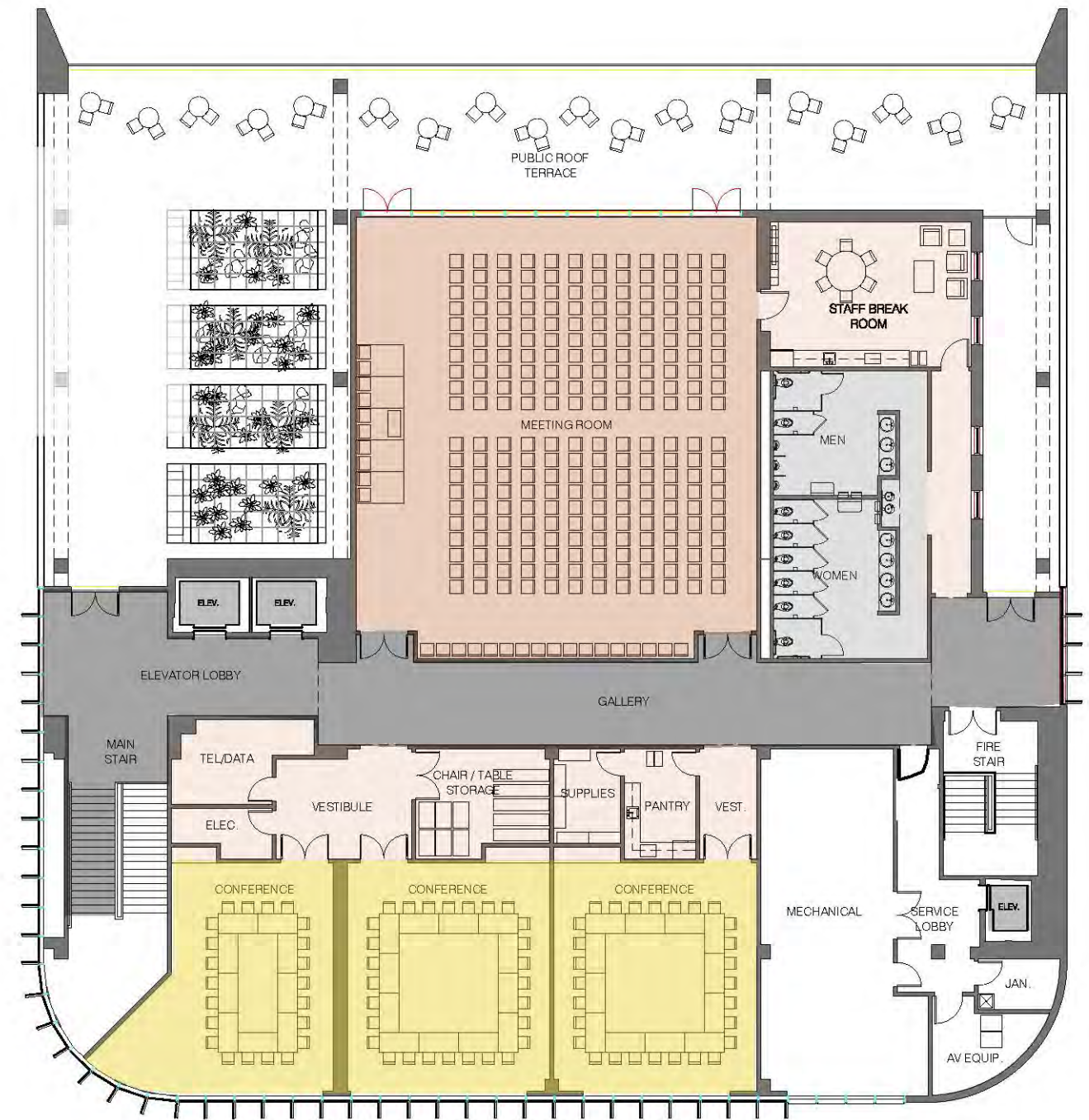
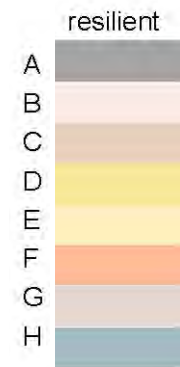
EBRPL RIVER CENTER BRANCH LIBRARY
3.5.15



- resilient
- A
 - B
 - C
 - D
 - E
 - F
 - G
 - H
- carpet
- A
 - B
 - C
 - D
 - E
 - F
- ceramic
- A
 - B



level 1 + 2 floor finishes



level 3 + 4 floor finishes

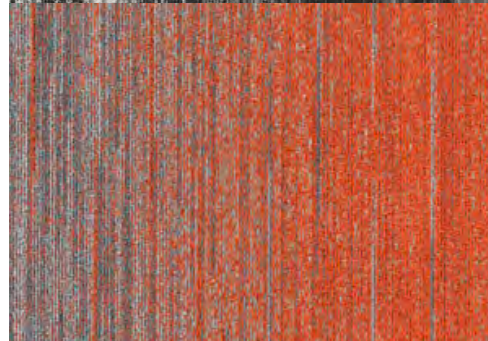
EBRPL RIVER CENTER BRANCH LIBRARY
3.5.15



quiet study



adults



group study

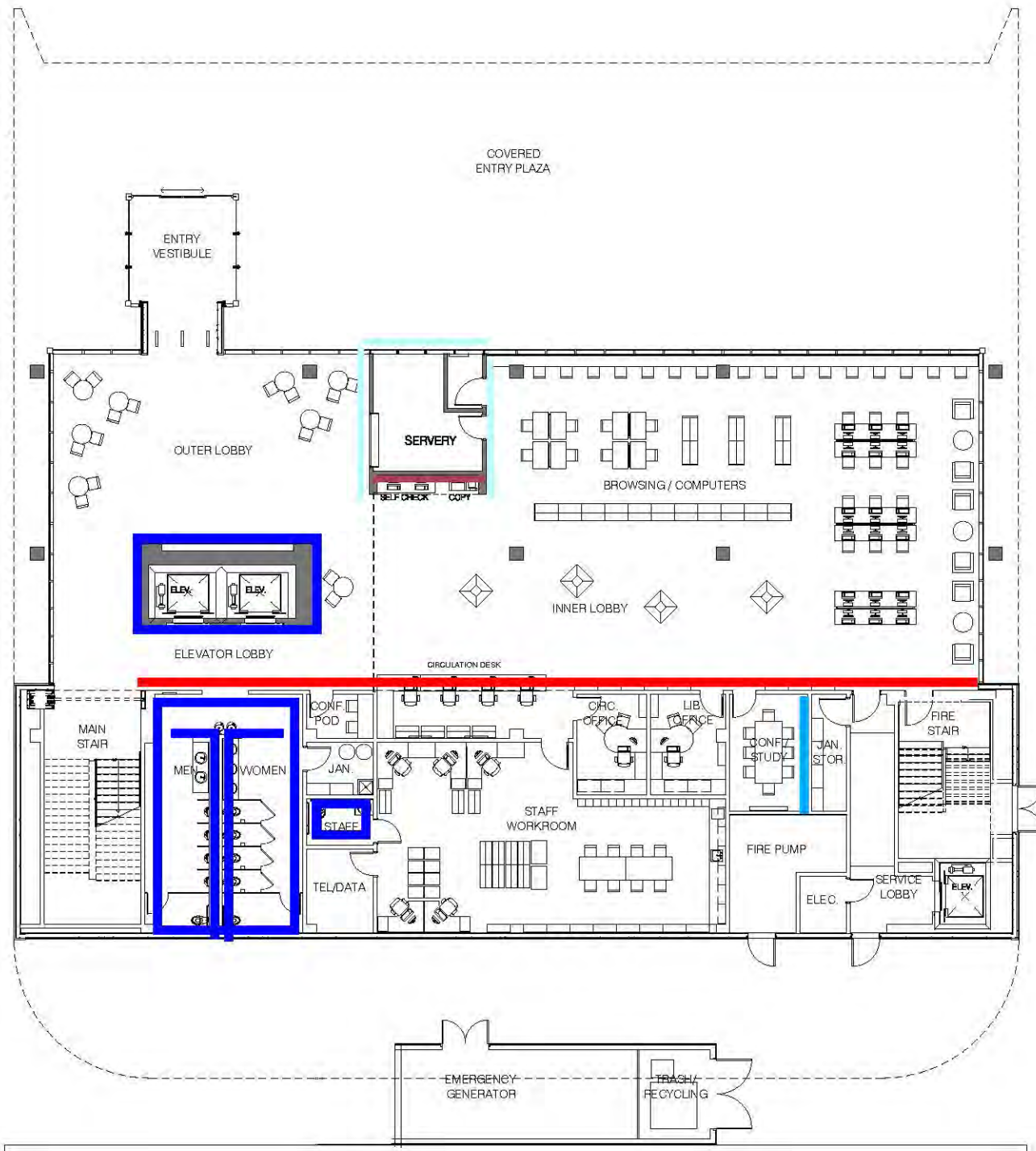


teens



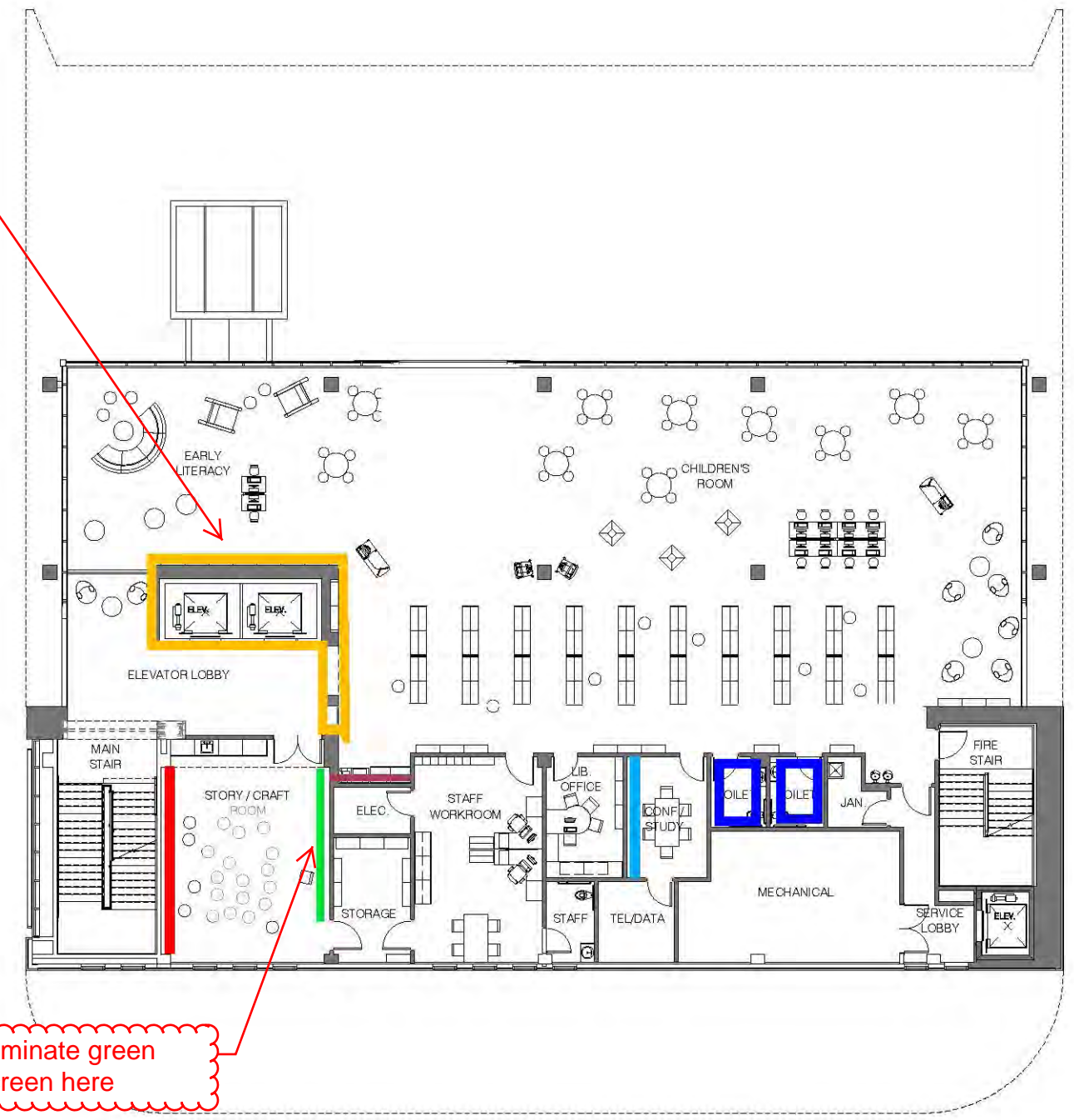
level 3 flooring

EBRPL RIVER CENTER BRANCH LIBRARY
2.9.15



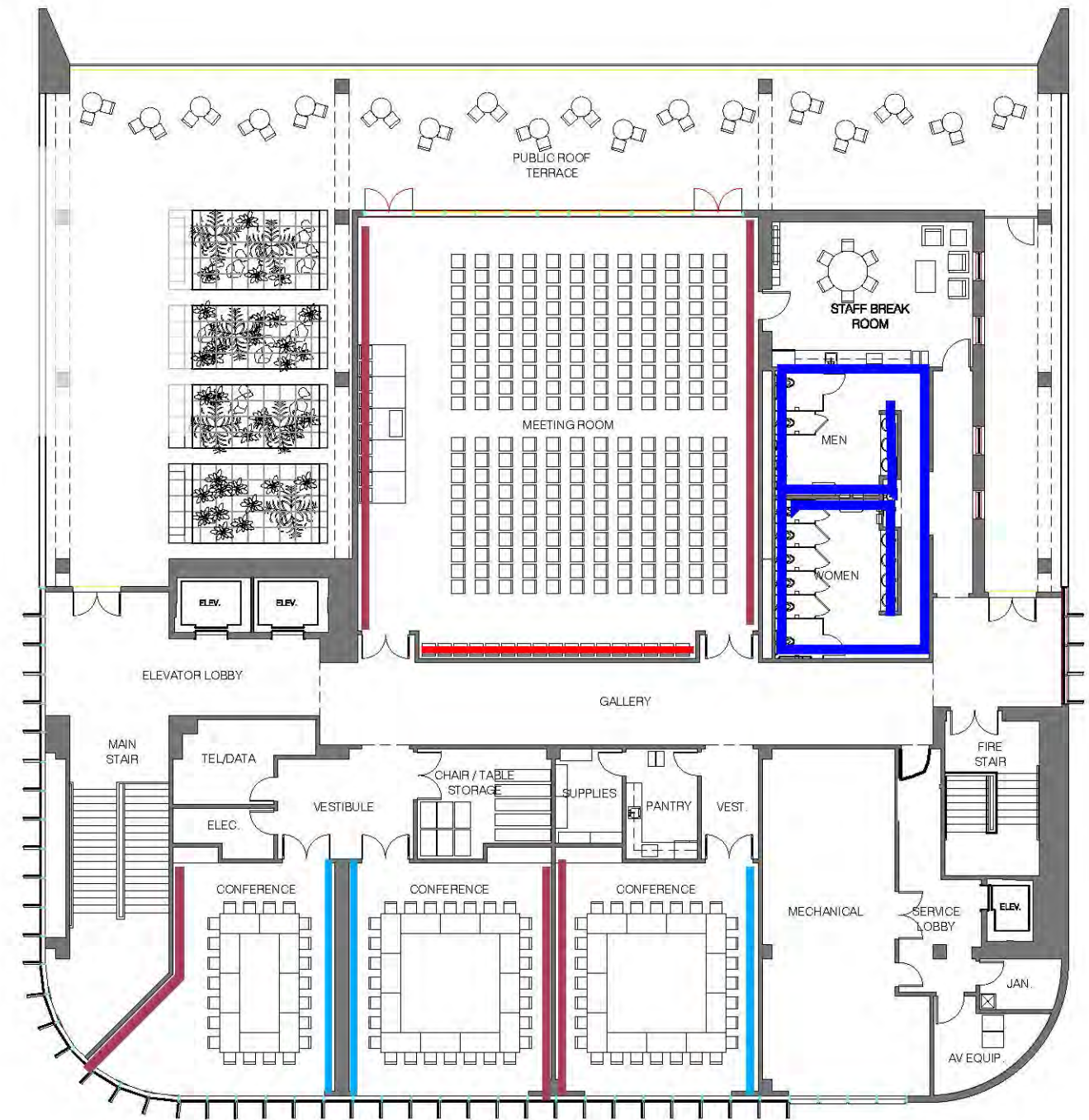
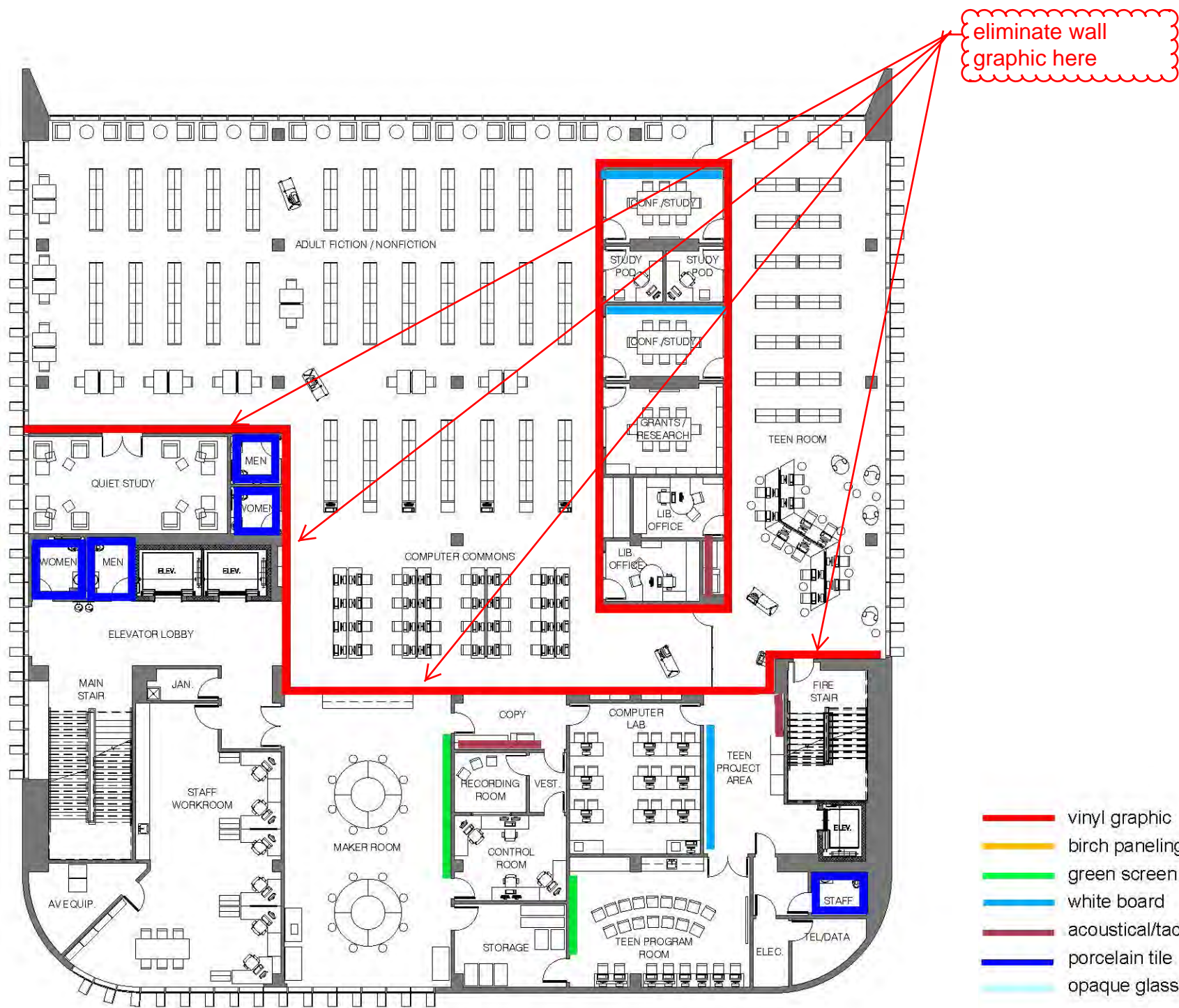
may be tile in lieu of birch so that form is treaded consistently with level 1

- vinyl graphic
- birch paneling
- green screen
- white board
- acoustical/tack
- porcelain tile
- opaque glass



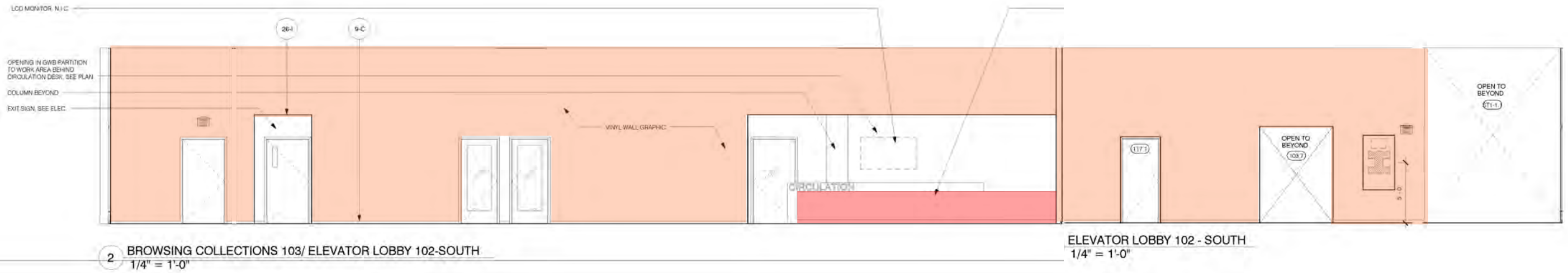
eliminate green screen here

level 1 + 2 wall finishes



level 3 + 4 wall finishes

EBRPL RIVER CENTER BRANCH LIBRARY
3.5.15

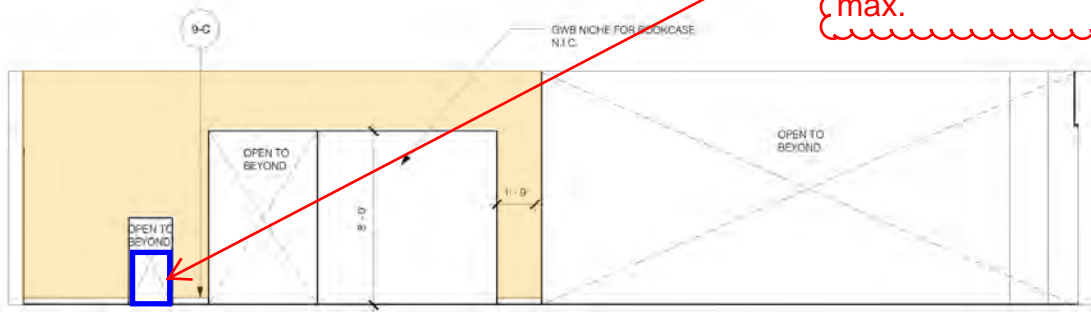


2 BROWSING COLLECTIONS 103/ ELEVATOR LOBBY 102-SOUTH
1/4" = 1'-0"

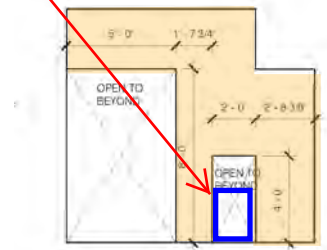
ELEVATOR LOBBY 102 - SOUTH
1/4" = 1'-0"

"mouse" doorway
to meet ADA cane
clearances -- 27"H
max.

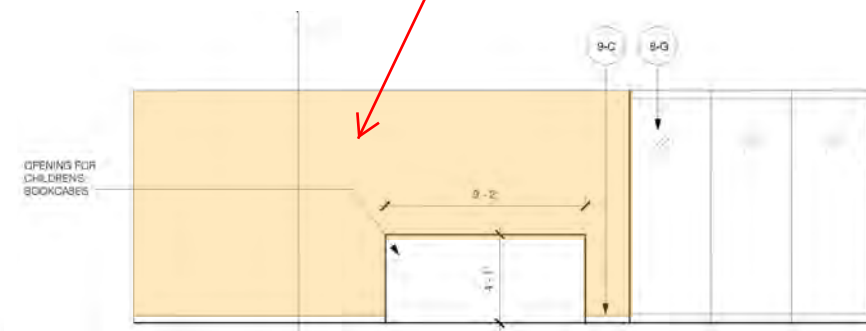
porcelain tile?



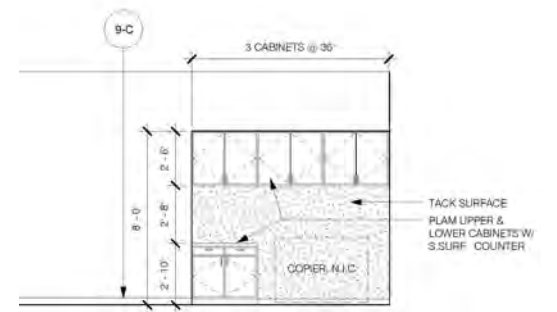
8 CHILDREN'S ROOM 202-WEST
1/4" = 1'-0"



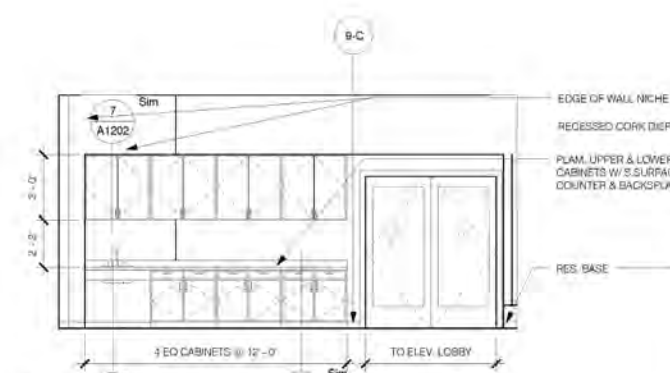
15 ELEVATOR LOBBY 201 - EAST
1/4" = 1'-0"



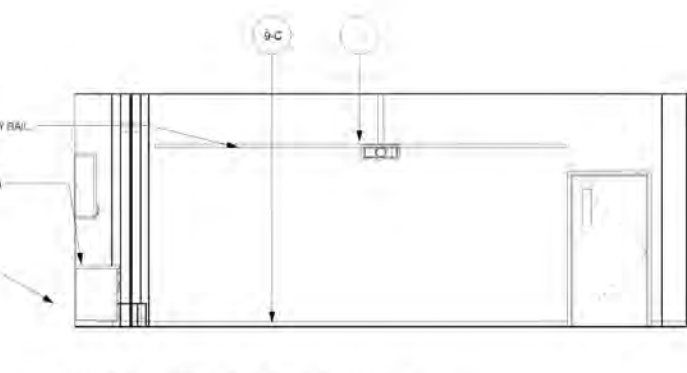
2 2ND FLOOR - SOUTH
1/4" = 1'-0"



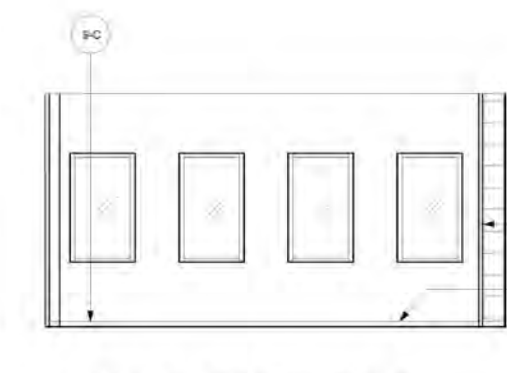
9 CHILDREN'S ROOM 202-SOUTH
1/4" = 1'-0"



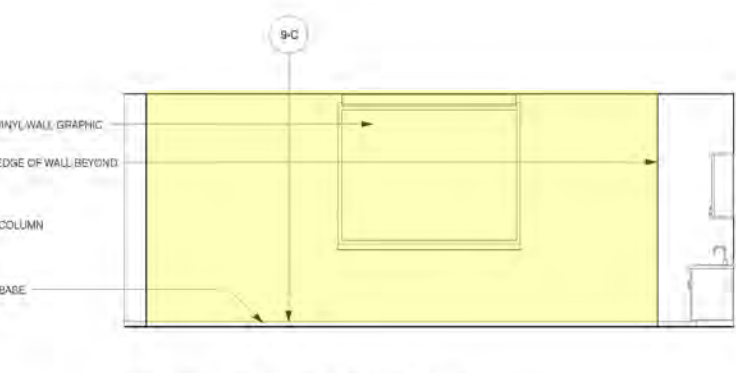
24 STORY/ CRAFT ROOM 214 - NORTH
1/4" = 1'-0"



23 STORY/ CRAFT ROOM 214 - EAST
1/4" = 1'-0"



22 STORY/ CRAFT ROOM 214 - SOUTH
1/4" = 1'-0"



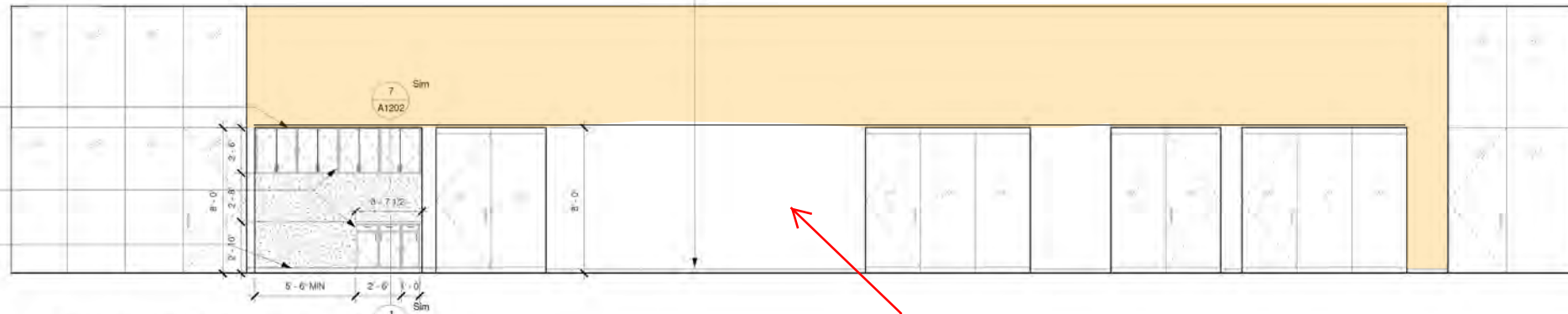
21 STORY/ CRAFT ROOM 214 - WEST
1/4" = 1'-0"

interior elevations: levels 1 & 2

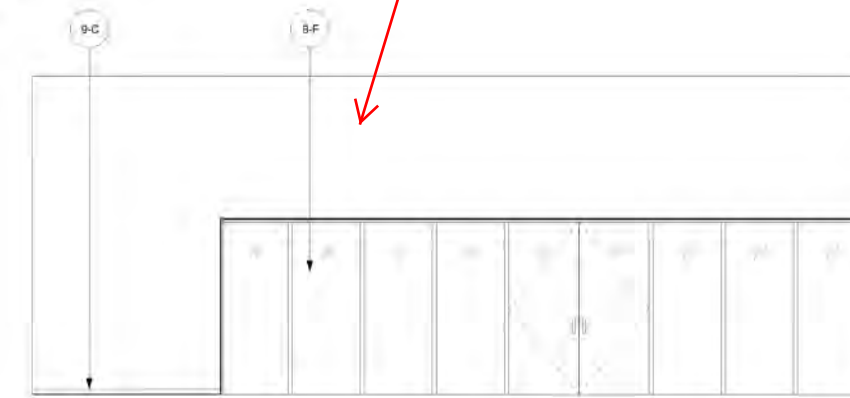


3 ADULT COLLECTIONS 307 - EAST
1/4" = 1'-0"

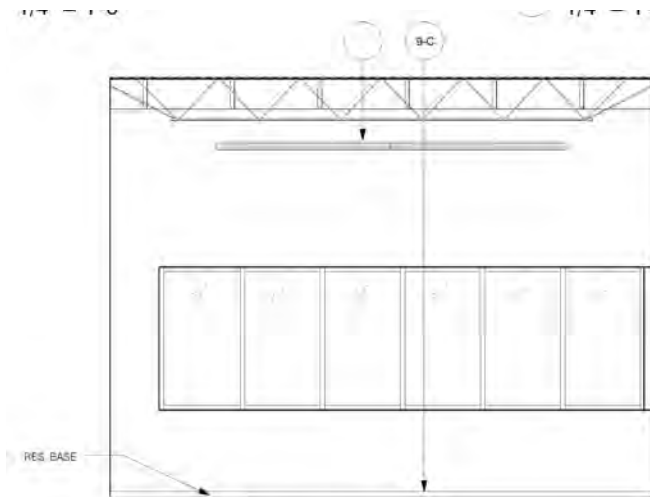
3 TEEN COLLECTIONS 316 - EAST
1/4" = 1'-0"



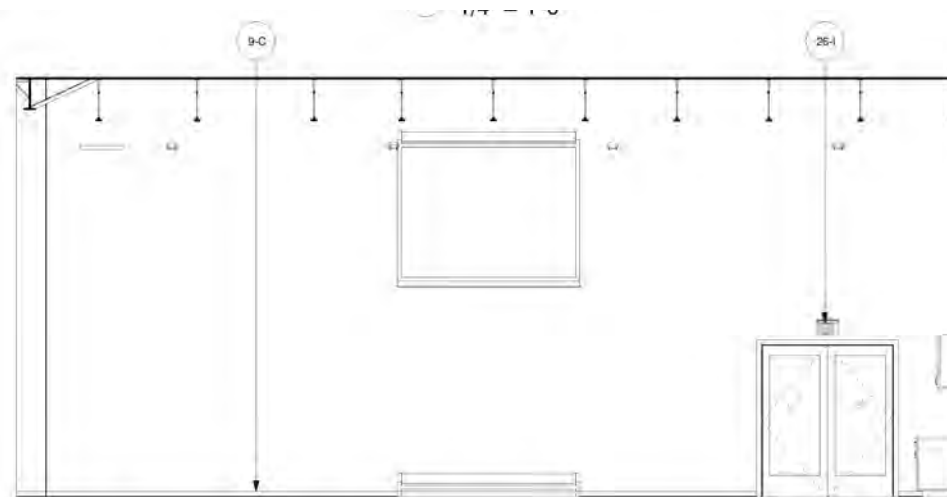
1 TEEN COLLECTIONS 316 - WEST
1/4" = 1'-0"



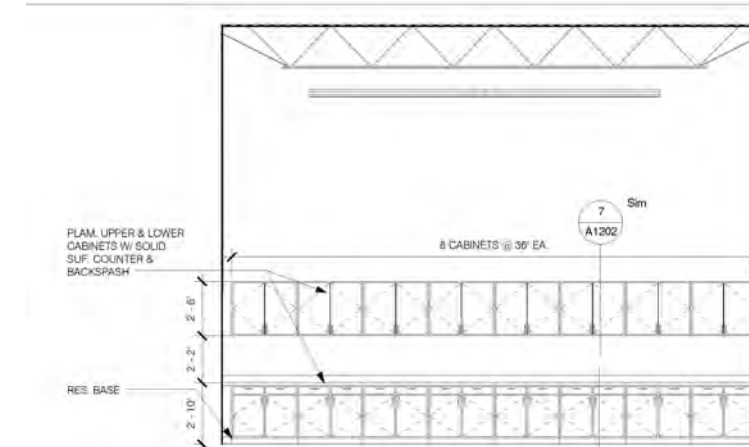
4 ADULT COLLECTIONS 307 - SOUTH
1/4" = 1'-0"



10 MAKER ROOM 328 - SOUTH
1/4" = 1'-0"



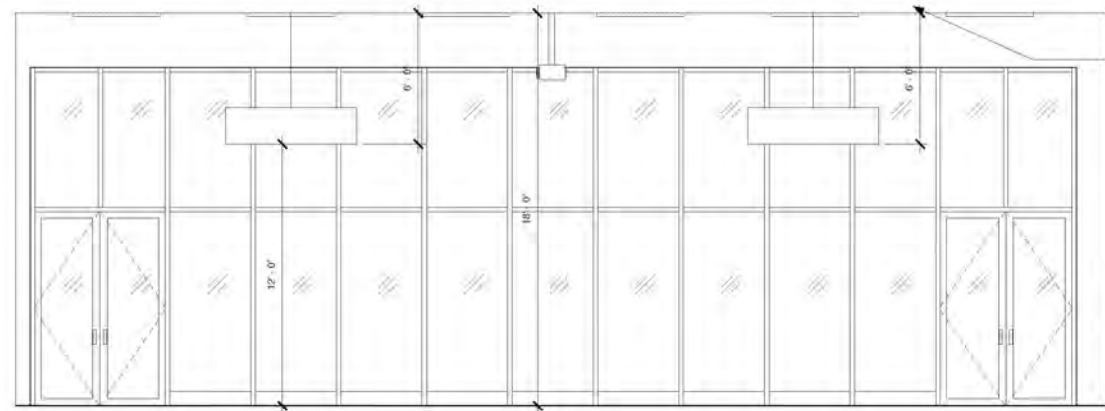
9 MAKER ROOM 328 - WEST
1/4" = 1'-0"



12 MAKER ROOM 328 - NORTH
1/4" = 1'-0"

NUMBERED NOTES	
DIV. 01 GENERAL	1.4 ALIGN NEW FINISH FACES
DIV. 02 CONCRETE	1.8 PATCH EXISTING
DIV. 03 MASONRY	1.4 CONCRETE SLAB - SEE STRUCT.
DIV. 04 METALS	1.4 NEW MASONRY OPENING, SEE STRUCT.
DIV. 05 FINISHES	1.4 NEW INTERIOR STL. GUARDRAIL
DIV. 06 WOOD	1.4 WALL-MOUNTED STAIR HANDRAIL
DIV. 07 CASEWORK	1.4 WOOD TRIM
DIV. 08 OPENINGS	1.4 CASEWORK
DIV. 09 FURNISHINGS	1.4 WAINSCOT
DIV. 10 SPECIALTIES	1.4 WOOD BASE
DIV. 11 EQUIP	1.4 MAGNETIC HOLD OPEN
DIV. 12 FURNISHINGS	1.8 DOOR OPERATOR
DIV. 13 PLUMBING	1.4 MIRROR
DIV. 14 HVAC	1.0 GLASS PANEL WALL
DIV. 15 ELECTRIC CONTROLS	1.4 ACCESS PANEL
DIV. 16 ELECTRIC CONTROLS	1.4 STOREFRONT
DIV. 17 COMMUNICATION	1.4 CURTAIN WALL
DIV. 18 SAFETY	1.4 HOLLOW MET. FRAME WINDOW
	1.4 EXISTING FINISHES TO REMAIN
	1.4 UNVL. WALL COVERING
	1.4 RESILIENT BASE
	1.4 CERAMIC TILE
	1.4 FILAM
	1.4 DECORATIVE WALL CLADDING
	1.4 NEW GWB. PTD.
	1.4 MET. PANEL WALL
	1.4 WALL TALKERS
	1.4 DISPLAY CASE
	1.4 SEE SIGNAGE SCHEDULE
	1.4 CORNER GUARD
	1.4 PAPER TOWEL DISPENSER
	1.4 TOILET SEAT COVER DISPENSER
	1.4 CHALK BOARD
	1.4 FIRE EXTINGUISHER CABINET
	1.4 PROJECTION SCREEN
	1.4 RECESSED FLOOR MAT
	1.4 ROLLER SHADE, MANUAL
	1.4 HYDRATION STATION
	1.4 FLOOR DRAIN
	1.4 CLEANOUT
	1.4 FIN. TUBE RADIATOR
	1.4 CABINET UNIT HEATER
	1.4 AIR GRILL
	1.4 LINEAR DIFFUSER
	1.4 THERMOSTAT CONTROLS
	1.4 OCCUPANCY SENSOR
	1.4 ELECTRIC OUTLET
	1.4 ELECTRIC PANEL BOARD
	1.4 LIGHT SWITCH
	1.4 LIGHTING PANEL BOARD
	1.4 WALL MOUNTED LIGHT FIXTURE
	1.4 CEILING MOUNTED LIGHT FIXTURE
	1.4 EMERGENCY LIGHT
	1.4 EXIT SIGN
	1.4 WALL PLATE FOR FLATWIRE APPOINTMENT BOX ACCESS
	1.4 WIRELESS ACCESS POINT
	1.4 DATA OUTLET
	1.4 VIDEO PROJECTOR
	1.4 VIDEO MONITOR N.I.C.
	1.4 VOICE OUTLET
	1.4 VOICE/ATA OUTLET
	1.4 CARD READER
	1.4 SECURITY CAMERA
	1.4 FIRE ALARM STROBE
	1.4 FIRE PULL STATION
	1.4 FIRE EXT. (EXISTG.)
	1.4 FIRE EXT. (NEW)

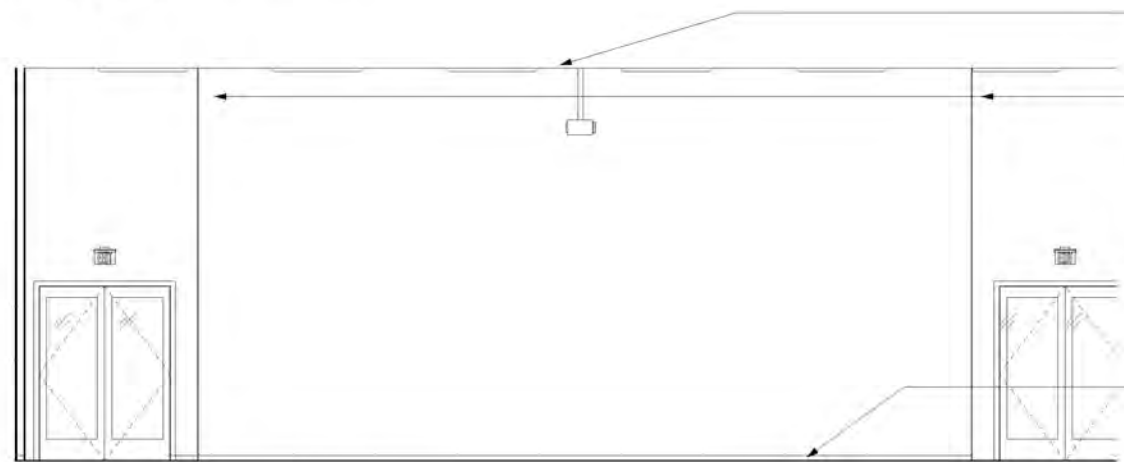
interior elevations: level 3



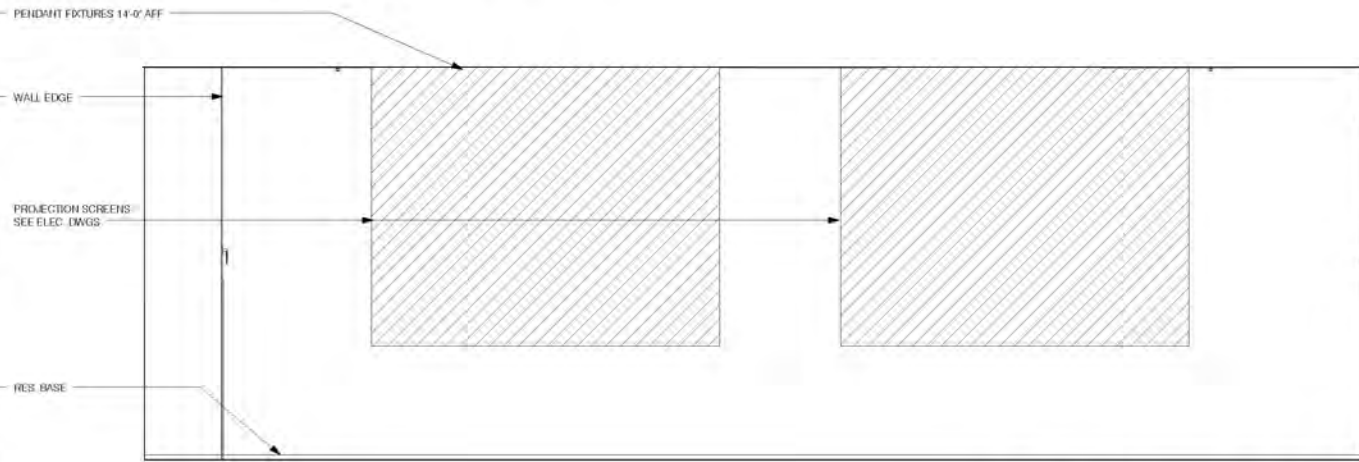
8 MEETING ROOM 402 - NORTH
1/4" = 1'-0"



7 MEETING ROOM 402 - EAST
1/4" = 1'-0"



6 MEETING ROOM 402 - SOUTH
1/4" = 1'-0"



5 MEETING ROOM 402 - WEST
1/4" = 1'-0"

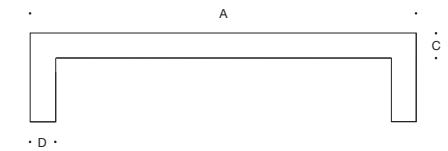
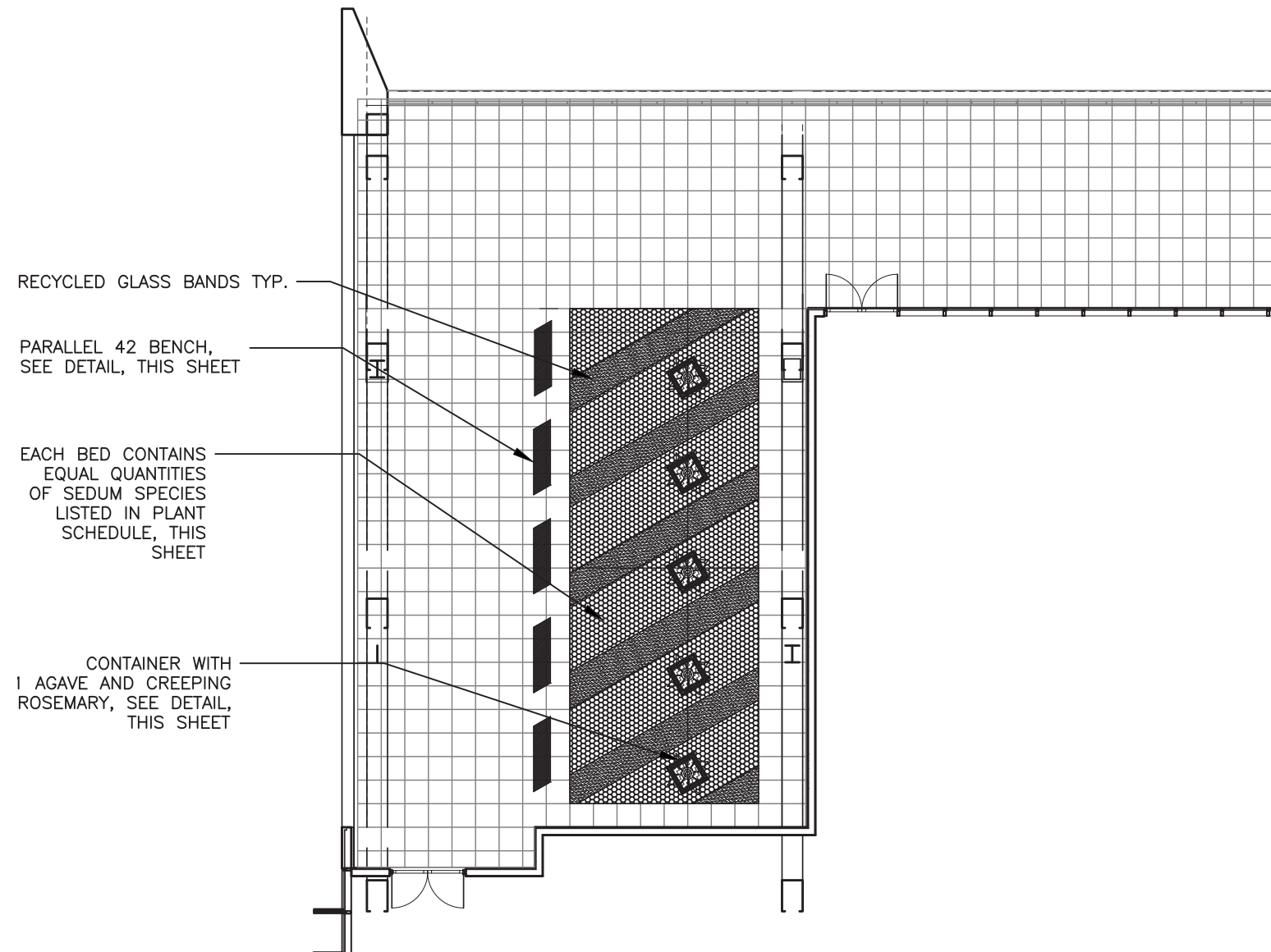
interior elevations: level 4



terrace planter with greenscreen alternate



terrace planter with greenscreen alternate

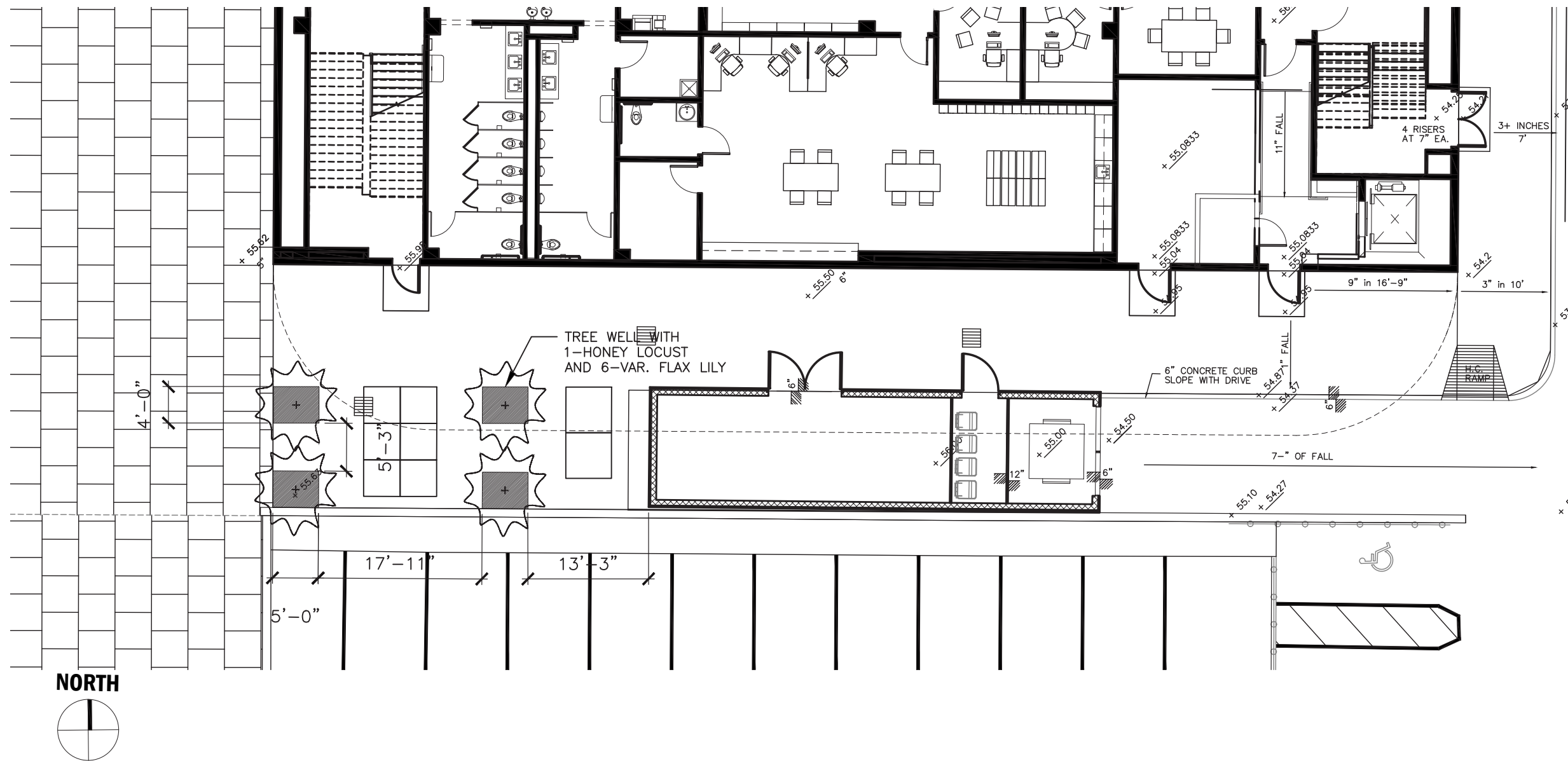


	Lamp	A	B	C	D	Anchorage
7730LED	16.8W LED	70 ⁷ / ₈ x 15 ³ / ₄	18 ¹ / ₈	4 ³ / ₄	4 ³ / ₄	890K
7750P	2 18W CF triple-4p	70 ⁷ / ₈ x 15 ³ / ₄	18 ¹ / ₈	4 ³ / ₄	4 ³ / ₄	890K

PLANT SCHEDULE

QTY.	BOTANICAL NAME	COMMON NAME	SIZE	SPECIFICATIONS
SHRUBS/PERENNIALS				
5	AGAVE AMERICANA	CENTURY PLANT	7 GAL	SPECIMEN QUALITY, 36" SPREAD
20	ROSMARINUS OFFICINALIS 'PROSTRATUS'	CREEPING ROSEMARY	1 GAL	15" SPREAD, FULL POT, WELL ROOTED, 18" O.C.
-	SEDUM RUPESTRE 'ANGELINA'	ANGELINA STONECROP	1 GAL	6" HT. 8" SPREAD, FULL POT, WELL ROOTED, 12" O.C.
-	SEDUM MEXICANUM 'LEMON BALL'	LEMON BALL MEXICAN STONECROP	1 GAL	6" HT. 8" SPREAD, FULL POT, WELL ROOTED, 12" O.C.
-	SEDUM MORANENSE	RED STONECROP	1 GAL	6" HT. 8" SPREAD, FULL POT, WELL ROOTED, 12" O.C.

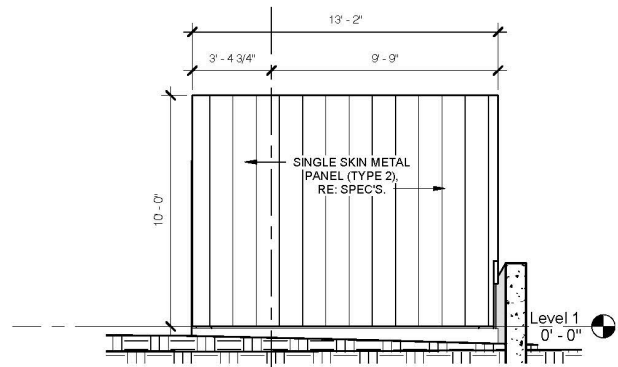
roof terrace planters and benches



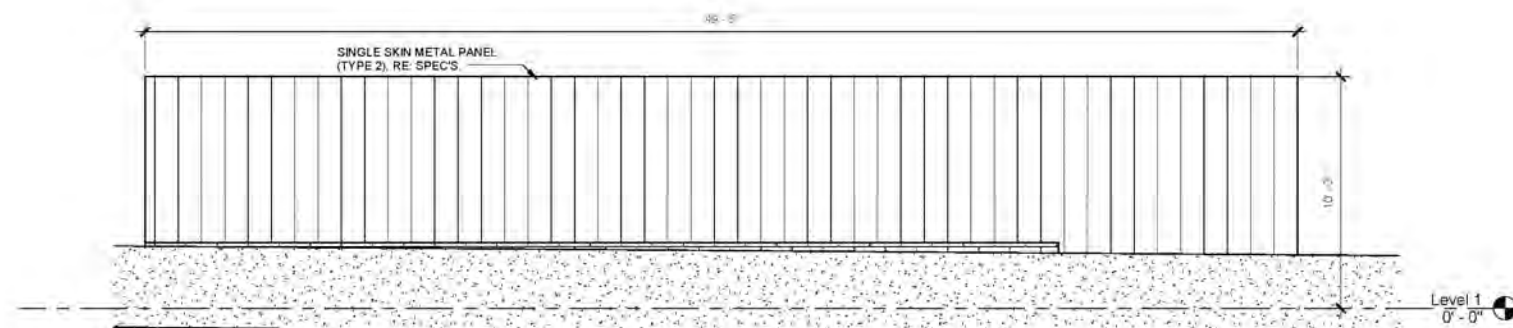
PLANT SCHEDULE

QTY.	BOTANICAL NAME	COMMON NAME	SIZE	SPECIFICATIONS
TREE/SHRUB				
4	GLEDITSIA TRIACANTHOS VAR. INERMIS	THORNLESS HONEY LOCUST	B&B	3" CAL. 14'-16' HEIGHT, SPECIMEN QUALITY
24	DANELLA TASMANICA 'VARIGATA'	VAR FLAX LILY	3 GAL	12" HEIGHT, 12" SPREAD, WELL ROOTED, FULL POT, 24" O.C.

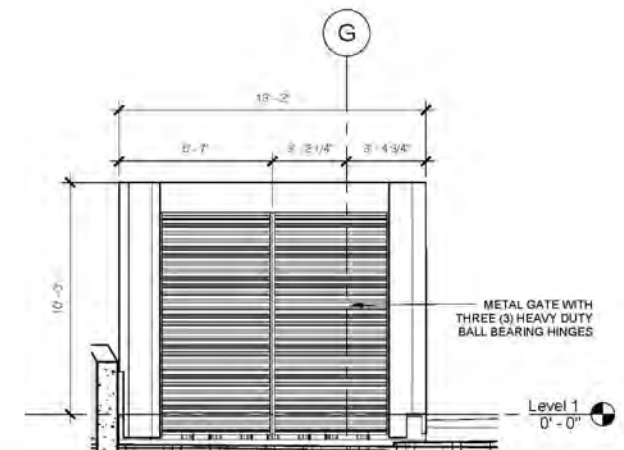
pedestrian walkway trees



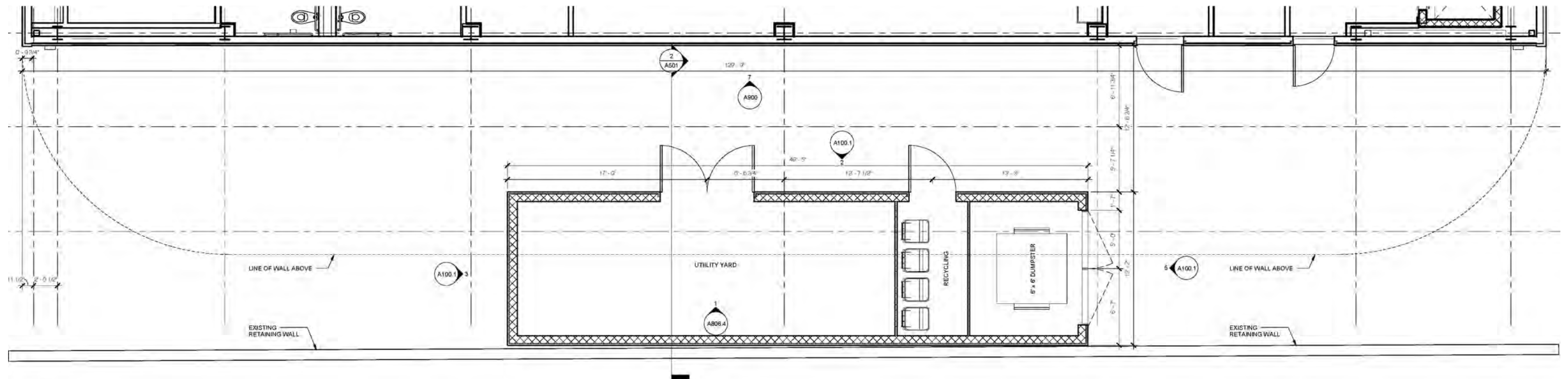
3 Utility Yard - West Elevation
1/4" = 1'-0"



4 Utility Yard - South Elevation
1/4" = 1'-0"



5 Utility Yard - East Elevation
1/4" = 1'-0"



trash / recycling enclosure